

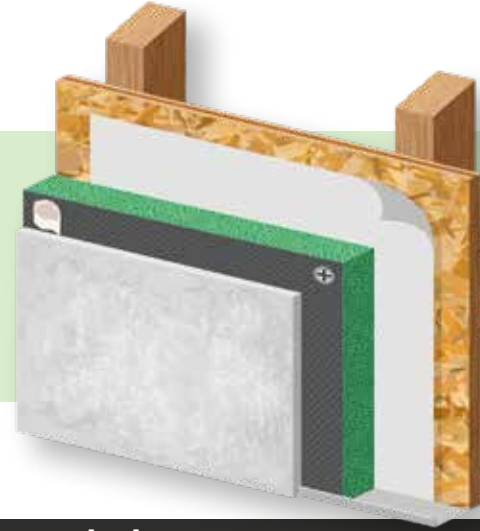
HB ONE STUCCO

The HydroBlok ONE Exterior Stucco System is a cutting-edge exterior wall cladding system designed for superior thermal performance, moisture control, and long-term durability. It combines energy-efficient extruded polystyrene (XPS) insulation with a reinforced cementitious coating, creating a lightweight, easy-to-install solution for both commercial and residential projects.

HB ONE significantly improves installation efficiencies:

Reduces 4 Steps vs Traditional Stucco:

- No “scratch” or “brown” coat necessary
- Move to the “final” coat with zero wait time
- No lathe necessary
- No paper required
- Optional - OSB board / drainage mat



System Components Include:

HB ONE Boards

XPS core board with proprietary cementitious coating with embedded fiberglass mesh.

Seam (Base) Coat

A high-performance, proprietary cementitious base coat with embedded reinforcing mesh.

Adhesive Fiberglass Mesh Seam Tape

Fiberglass mesh for seaming board joints together for optimal crack resistance.

Adhesive/Mechanical Fasteners

Specified adhesive or fasteners to secure boards to substrate. For maximum shear strength use an approved adhesive + HydroBlok fasteners.

Optional Drainage Plane

Drainage system for moisture control.

Low Expansion Polyurethane Foam

Low VOC, HFC and HCFC Free expanding foam for sealing boards and providing air and weather barrier at fenestration openings.

Optional Water Resistive Barrier (WRB)

Apply to the exterior of buildings with wood cladding, such as OSB, as a base to further protect the wall assembly from moisture intrusion while still allowing vapor to escape.



PRODUCT DATA

Available Sizes:

SKU	DESCRIPTION	UOM	Weight
HBWB366012	36" x 60" x ½" Wallboard	75/Pallet	10.02 lb
HBW489612	48" x 96" x ½" Wallboard	75/Pallet	22.8 lb
HBWB36601	36" x 60" x 1" Wallboard	3/Box, 36/Pallet	10.47 lb
HBWB48602	48" x 60" x 2" Wallboard	20/Pallet	19.53 lb

ACCEPTABLE SUBSTRATES

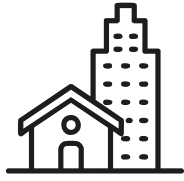
For an optimized installation, HydroBlok ONE Sheathing Boards are the preferred substrate for the HydroBlok Exterior Stucco System, providing a structural, moisture-resistant, and thermally efficient base. Unlike traditional sheathing materials, HydroBlok ONE incorporates the same extruded polystyrene (XPS) core with a reinforced cementitious surface, offering superior impact resistance, dimensional stability, water and mold resistance. When used as the primary sheathing, it eliminates the need for house wrap or additional weather barriers, while still allowing for the incorporation of a drainage plane between the sheathing and the stucco panels. This design ensures that any incidental moisture is effectively managed, enhancing long-term durability and building envelope performance. The stucco panels are mechanically fastened over the HydroBlok ONE sheathing, maintaining a continuous insulation layer while providing a highly durable, vapor-permeable cladding system with optional drainage plane.

The HydroBlok Exterior Stucco System is designed for installation over a variety of structurally sound sheathing substrates that provide adequate support and compatibility with the insulation and finish system. All substrates must be dry, free from contaminants, and securely fastened to meet manufacturer recommendations and applicable building codes. The use of untreated gypsum board or other non-moisture-resistant sheathing materials is not permitted unless properly protected within a weather-resistant assembly.

Acceptable sheathing materials include:

- PermaBase® Cement Board
- Cement boards conforming with ASTM C1325 (Type A - exterior)
- Poured concrete/unit masonry
- ASTM C1177 type sheathings
- Weather Defense™ Platinum sheathing
- GreenGlass® sheathing
- e2XPTM sheathing
- GlasRoc® sheathing
- Securock™ glass-mat sheathing
- DensGlass®
- DenseElement exterior sheathing
- Gypsum sheathing (ASTM C79/C1396)
- Exposure I or exterior plywood (Grade C/D or better)
- Exposure I OSB
- Huber Zip

APPLICATIONS



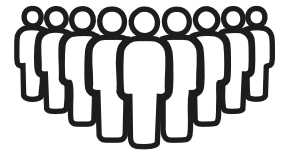
Residential/Commercial

For use in new and retro-fit construction projects, residential or commercial. Its easy-to-install design makes it a cost-effective choice for retrofit applications, especially where energy efficiency upgrades are required.



High Moisture/Humidity Areas

HB ONE is ideal for areas with high humidity, frequent rainfall, or exposure to snow. The superior water-resistant properties make it perfect for protecting building structures in challenging climates.



High Traffic Areas

The combination of the XPS core, cementitious coating, and fiberglass mesh ensures the system can withstand impacts, making it suitable for high-traffic commercial and public spaces. This durability also translates to reduced maintenance over the life of the building.

ADVANTAGES

High-Performance XPS Core

The XPS core offers an exceptional R-value of "4" per inch of thickness, ensuring optimal thermal insulation. This contributes to energy savings by reducing heating and cooling demands, making HB ONE ideal for both residential and commercial applications.

Cementitious Coating

A proprietary cementitious coating embedded with fiberglass mesh enhances the board's impact resistance and durability. This outer layer creates a robust weather-resistant barrier that protects the insulation core from external forces while preventing moisture intrusion.

Embedded Fiberglass Mesh

The reinforced mesh within the cementitious layer adds extra strength, preventing cracking and maintaining the system's structural integrity. This layer also increases the product's resistance to physical impacts, making it ideal for high-traffic areas.

TESTING AND COMPLIANCE

HB ONE Stucco System has the following tests pending:

ASTM G153: Standard Practice for Accelerated weathering of Exterior Insulation and Finish Systems.

ASTM E2485: Standard Test Method for Freeze/Thaw.

ASTM B117: Standard Test Method Salt spray Resistance of Exterior Insulation Systems.

ASTM E2134: Standard Test Method Tensile bond adhesion for Exterior Insulation Systems.

ASTM E331: Standard Test Method for Water Resistance of Exterior Insulation Systems.

ASTM C578: Standard Test Method Salt spray Resistance of Exterior Insulation Systems.

ASTM E330: Standard Test of Wind Load of Exterior Insulation Systems.

ASTM E2486: Standard Test Method for Impact Resistance of Exterior Insulation Systems.

ASTM E2273: Standard Test Method for Drainage of Exterior Insulation Systems.

UL U356: One-Hour Fire-Resistance Rated for Limited Load Bearing Wall Assemblies.

ICC-ES Evaluation: Compliance with ICC-ES AC235.

BASIC INSTALL

- 1 Apply House Wrap**
Install HydroBlok or equivalent breathable waterproof membrane (house wrap) over sheathing as per manufacturer instructions. Membrane is not required if using HB ONE sheathing boards.
- 2 Install Drainage Plane**
Attached approved drainage plane to sheathing as per manufacturer's instructions. See full installation guide for a list of recommended drainage plane systems.
- 3 Install Weep Screed**
Attach approved weep screed or drainage strips at the bottom of all walls per local building codes.
- 4 Attach HB One Boards**
Secure HB ONE building boards to the structure using HydroBlok fasteners, ensuring fasteners are sunk 1/8" below the surface.
- 5 Stagger Seams**
Stagger board seams by at least 24 inches.
- 6 Gap For Sealant**
Leave a 3/16-inch (0.188") gap around windows and doors for expansion.
- 7 Seal Openings**
Seal around windows and doors with HydroBlok expanding polyurethane foam or equivalent.
- 8 Tape Seams**
Apply HydroBlok 4" Mesh Tape or equivalent over seams and corner bead.
- 9 Apply Base Coat**
Use a flat trowel to apply base coat over mesh, feathering at least 6" on each side.
- 10 Cover Exposed Foam**
Apply base coat and mesh tape to any exposed foam at termination points and around corners. Hydroblok Corner Beads are recommended for stucco applications..
- 11 Finish Screws**
Spot (cover) screws and washers with base coat and allow 24 hours for drying.
- 12 Apply Finish Stucco Coat or Other Decorative Finish**
Apply stucco finish directly to the HB ONE boards, ensuring compliance with ASTM C1382 or ANSI 118.10 standards. Additional coats may be required for fine stucco finishes. For other decorative finishes such as brick veneer, natural stone or tile please follow the manufacturers recommended installation instructions.

Full application instructions can be found at:
www.hydroblok.com

DESIGN & CONSIDERATIONS

No Primer Required: Do not apply primers to HB ONE boards, as they may cause delamination.

Additional Finishes: HB ONE boards can be used with finishes such as brick veneer, ceramic tile, porcelain tile, or natural stone. Follow manufacturer instructions for specific finishes.

Waterproof Sealing: Where a 100% waterproof seal is required, use HydroBlok expanding polyurethane foam or equivalent between boards.

Efflorescence: Efflorescence is a naturally occurring phenomenon where water-soluble salts migrate to the surface of cement-based products. When properly managed, efflorescence should not affect the performance of HB ONE.

LIMITATIONS

Not Intended for Continuous Immersion: HB ONE should not be installed in environments subject to prolonged water immersion, such as below-grade foundation walls or areas where the system would be submerged.

UV Exposure Protection Required: While durable, the HB ONE system must be finished with an appropriate UV-protective coating if exposed for more than 30 days to prevent degradation from long-term exposure to sunlight.

Installation in High-Wind Areas: For areas with high wind loads, additional fastening or bracing may be required as per local building codes and standards to ensure adequate attachment.

Temperature Limitations: Do not install HB ONE in temperatures below 40°F (4°C) or in conditions where temperatures could drop below freezing before adhesives and coatings have fully cured.

PACKAGING & STORAGE

Packaging: Boards are shipped on pallets, wrapped for protection.

Storage: HB ONE building boards should be stored in a dry area off the ground prior to use to prevent the formation of efflorescence.

Product	HBWB366012	HBW489612	HBWB36601	HBWB48602
Dimensions	36"x60"x1/2"	48"x96"x1/2"	36"x60"x1"	48"x60"x2"
Pieces Per Pallet	75	75	36	20
Sq. Ft per pallet	1,125	2,400	540	400
Weight per pallet	752	1,710	377	391
Quantity per truck	3,150	1,425	1,512	620
Max Pallets/truck	42	19	42	31
Sq. Ft per truck	47,250	5,600	22,680	12,400
Weight Per truck	31,563	32,490	15,830	12,108

WARRANTY

10-Year Limited Warranty

HydroBlok offers a Limited 10-Year Warranty, subject to the conditions and limitations as stated in the full warranty information. HydroBlok warrants that all its foam based products will be free from all manufacturing defects, and will not deteriorate or break down under normal use for 10 YEARS from the date of purchase when the product is used and installed in accordance with the written specifications of HydroBlok's technical data sheets, instructions and industry standard guidelines. Refer to full warranty details on the website for specific conditions and limitations.

Job Name _____

Contractor _____ **Date** _____

CONTACT INFORMATION

For technical assistance, installation support, or further inquiries, please contact:

HydroBlok Support Team

sales@hydroblok.com







844-588-9559

TECHNICAL PROPERTIES

Optional Drainage Plane: For enhanced moisture management, an optional drainage plane is recommended (Keene Driwall Rainscreen 10mm, DuPont StuccoWrap, or Benjamin Obdyke HydroGap SA). This allows water to drain away from the wall assembly, promoting faster drying and reducing the risk of mold or mildew.

Easy Installation & Labor Savings: HB ONE is specifically designed for fast and easy installation, saving as much as 60% over traditional external finishing systems. The lightweight nature of the XPS boards means they are easier to transport and handle on-site, reducing installation time and safety concerns compared to heavier traditional systems. The integrated components minimize the need for additional materials, further simplifying the installation process.

Versatility: HB ONE is compatible with a wide variety of decorative finishes, including stucco, textured acrylics, brick veneer, tile, porcelain, and natural stone. This flexibility allows building professionals to achieve a wide range of design aesthetics while maintaining the system's high-performance properties and durability.

Specification	Testing Standard	Result
 Flame Spread	ASTM E84	Class A
 Fire Resistance	ASTM E119	1 Hour
 Water Absorption	ASTM C578	Less than 1%
 Water Vapor Transmission	Meets ASTM C578	Meets ASTM E96
 Freeze/Thaw Resistance	ASTM C666	PASSED
 Fungus/Bacteria Resistance	ASTM D4551-12	PASSED
Density	N/A	Min 2LB/FT3
Compressive Strength	ASTM D1621	>36psi
Thermal Resistance	ASTM C518	R4 Per Inch of Thickness
Tensile Strength	ASTM D1623	>33psi
Linear Expansion	ASTM D1037	0.005%
Shear Testing	ASTM E72	TBD
VOC Emissions	ISO 16000-3: 2021	Zero
Adhesive Compatibility	ASTM C1397	ASTM C1397 Compliant

Disclaimer:

Achieves a 1-hour fire rating in certain wall assemblies. Ask for more details.